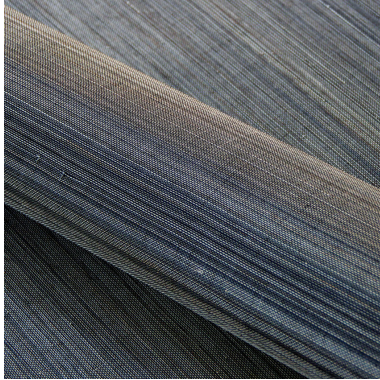


SUMATRA

PLANT FIBRES WALLCOVERING



SUA111



SUA112



SUA113



SUA114



SUA125



SUA127



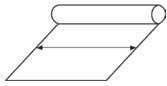
SUA126

NB : The portrayed colours may differ from reality.

References SUA1..

Composition: abaca on non-woven backing

Weight: $\pm 210 \text{ g/m}^2$ ($\pm 6,2 \text{ oz/sq yd}$)



Width of the wallcovering :
91 cm (35" 4/5)



Apply a ready mixed
PVA or EVA clear
adhesive directly to
the wall.



Pattern repeat is
0 cm (0") and
the design does
not need to be
matched.



Sold by cut
length.



Fire resistant:
EU: D, s3-d2



Ecological



Moderate light
resistance

More information and samples are available on request.

Omexco n.v. - Ambachtenlaan 12 - B-3001 Heverlee - Belgium
T. +32 16 40 18 80 - F. +32 16 40 00 17 - info@omexco.com

www.omexco.com